



Susan Barber &lt;sbarber@cnu.edu&gt;

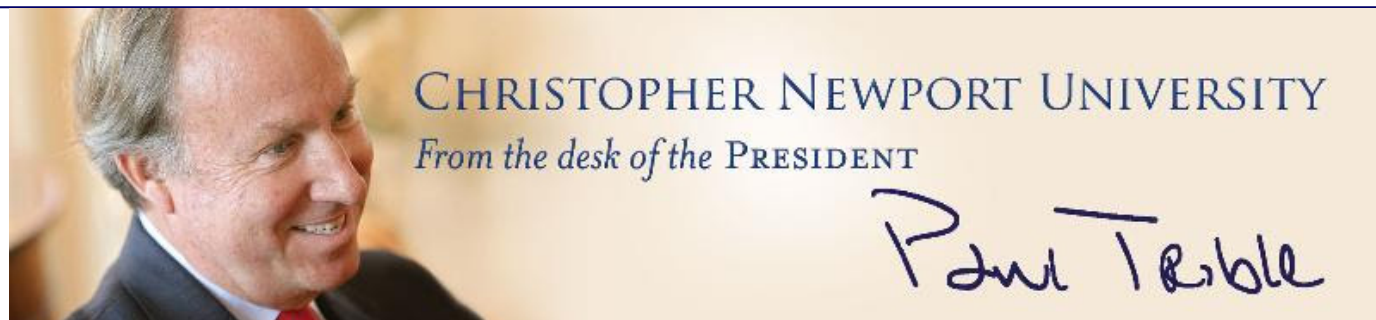
## Fwd: From the desk of President Tribble

1 message

Paul Tribble &lt;ptribble@cnu.edu&gt;

Mon, Jan 27, 2014 at 12:15 PM

To: employees &lt;employees@cnu.edu&gt;



Christopher Newport University

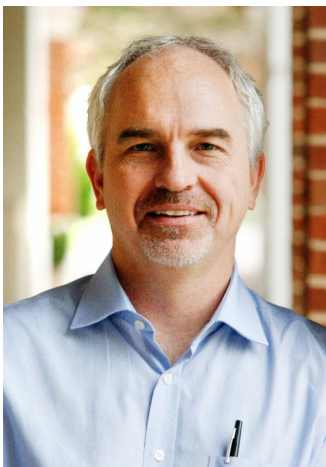
February 2014

### In This Issue

Great Teaching  
Soaring Applications  
Number of Graduates  
Increasing  
Record Faculty and Staff  
Campaign  
Campus Transformation  
Continues  
Athletics Update  
Alumni Holiday Events



**Our students and faculty have returned and the campus is alive once again! We look forward to a great semester and**

**2014.****Great Teaching at CNU****Dr. Quentin Kidd Receives Virginia's 2014 Outstanding Faculty Award**

The CNU academic experience is distinguished by great teaching, small classes and the rich interaction of faculty and students. Our faculty is intellectually alive and actively engages our students in the classroom and in meaningful research and scholarly work.

It is especially rewarding when the quality and excellence of our faculty is recognized by those outside of our university.

The State Council of Higher Education (SCHEV) has named Dr. Quentin Kidd as one of only twelve faculty members from Virginia's public and private colleges and universities to receive the 2014 Outstanding Faculty Award. Professor Kidd is a superb academic leader and teacher, ably chairs the Government Department and is the Director of CNU's respected Wason Center for Public Policy.

The Outstanding Faculty Award honors excellence in teaching, research, knowledge integration and public service. The twelve recipients are selected from thousands of faculty at Virginia's public and private schools.

Dr. Kidd will be honored during a February 20<sup>th</sup> ceremony in Richmond and will receive an engraved award and check for \$5,000 from the Dominion Foundation. Congratulations to Quentin and our special thanks for his many contributions to the success of CNU and our students.

**Soaring Applications**

The expanding reach and reputation of CNU are generating more and more interest and applications for admission. This year we have received almost 1,000 more applications than this time last year. To date we have received 5,979 applications and expect total applications this year to exceed 8,000 for a freshman class of 1,200 students.

	<b>1/20/14</b>	<b>1/21/13</b>	<b>1/23/12</b>
<b>Applications</b>	5,979	5,178	4,919

On December 15th we admitted 328 early decision applicants. Early

decision applicants, as you know, are obligated to attend and so that means 27% of next year's class of 1,200 seats are already filled.

We strongly recommend that all applicants visit the campus and be interviewed by our University Fellows. Over 2,100 interviews have taken place thus far in this admission cycle. The Fellows know and love CNU and communicate powerfully what makes this place so special. These interviews also give us an opportunity to move beyond the cold hard print of the application and find out more about these young men and women. We are not interested in spectators but want young people who will enthusiastically engage and contribute in and out of the classroom. Also, the interviews bring these prospective students to Christopher Newport and they are awed by the beauty of our campus and the marvelous sense of community where people speak and smile and truly care about each other.

### **Number of Graduates Increasing**



All of us at CNU continue to work hard on enhancing student success and our graduation numbers continue to increase. This table shows the number of degrees conferred from 2008-09 to our anticipated number of graduates this academic year. The "potential" 2013-14 number reflects students who have not yet submitted their Intent to Graduate but a review of their earned hours and in progress coursework indicates the potential to graduate in May 2014.

	2008-2009	2009-2010	2010-2011	2011-2012	2012-2013	Projected 2013-2014	Potential 2013-2014
TOTAL	906	1088	1106	1145	1212	1275	1348

As you can see, this year we anticipate awarding 1275-1348 diplomas and look forward to a festive graduation ceremony on the Great Lawn at 10 a.m. on May 10, 2014.

## **Record Faculty/Staff Campaign**

Each year our faculty and staff make financial commitments to the success of CNU. This year the Faculty/Staff Campaign was our best and reflects the remarkable spirit on the campus and the generosity of our colleagues.

Incredibly, 83% of our faculty and staff participated in this year's campaign. I doubt there is another school in America where 83% of all the people who work on the campus are willing to reach into their pockets and make a financial commitment to the success of that enterprise. In all, the 2013 Faculty/Staff Campaign raised \$116,210.

The morale on our campus has always been high but everyone appreciates the fact that the State provided a pay increase after many years of not being able to do anything and the Board of Visitors has supported a multi-year effort to make our pay and benefits more equitable.

## **The Campus Transformation Continues**

**Here is a summary of the many capital projects now underway on our beautiful campus.**

### **Student Success Center**



New Construction: 80,870 square feet

Architect: Glave & Holmes

Contractor: Whiting-Turner

Design Start: June 2009

Construction Start: August 2013



Start:

Construction May 2015

End:

Comments: The Student Success Center is currently under construction and will enhance and complement our commitment to student engagement and success. In the Center students will have access to all of the resources that impact the quality and success of the undergraduate experience. The co-location of these essential support services will emphasize their importance to student success and establish a sense of place for students as they move from the admission process to graduation. Offices will include Registrar, Financial Aid, Housing, Academic Success, Admission, Study Abroad, Student Success, Student Accounts/Cashier, Payroll, Business Office, Alumni Relations and Events, Institutional Research, Internal Audit, Planning and Budget, and the Executive Offices.

### **Bell Tower**



New Construction: 630 square feet

Architect: Glave & Holmes

Contractor: Whiting-Turner

Design Start: June 2009

Construction Start: August 2013

Construction End: May 2014

Comments: The bell tower is currently under construction.

Located between Forbes Hall and McMurrin Hall, the tower will be home to the ship's bell from the *SS United States* and will begin an era of bell ringing traditions at CNU. It will also feature a four-sided clock with Westminster chimes and a carillon.

### **Tribble Library - Phase II**



New Construction: 63,615 square feet

Renovation: 16,400 square feet

Total: 80,015

Architect: Glave & Holmes

Contractor: To be determined

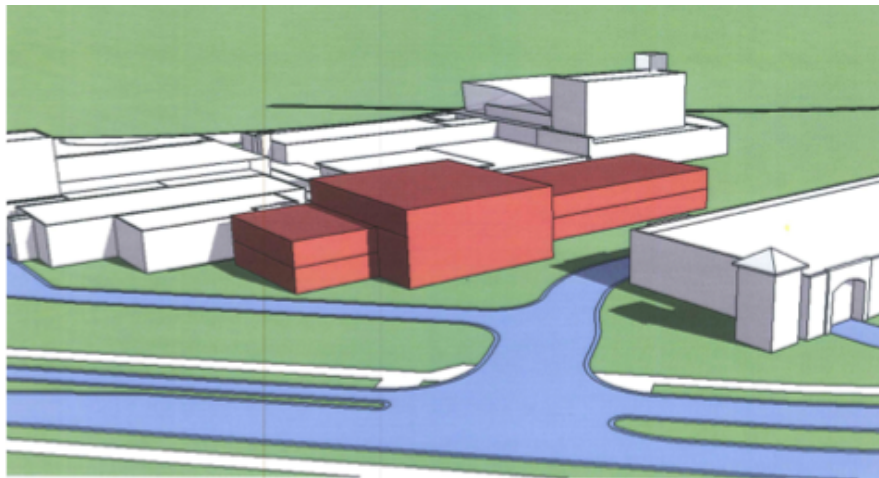
Design Start: September 2013

Construction Start: July 2014

Construction End: May 2016

Comments: A budget amendment was submitted this month to the General Assembly requesting funds for construction. The General Assembly is scheduled to adjourn in March. This project will provide additional resources for instruction, reading, group and individual study, technology, and lectures. It will increase the number of seats from 250 to 1,100, add a technology center and information commons to support excellence in learning, provide a special collections center, add two classrooms, and create a 100-seat lecture hall for library programming and special lectures.

### **Fine Arts Center and Band Rehearsal Hall**



**A depiction of the location, not the actual design**

New Construction: 88,060 square feet

Renovation: 16,980 square feet

Total: 105,040 square feet

Architect: Glave & Holmes

Contractor: To be determined

Design Start: June 2013

Construction Start: July 2015

Construction End: May 2017

Comments: Preplanning has been completed and Detail Design will soon begin. The project will be an addition to the Ferguson Center for the Arts for the relocation of the fine arts galleries and expansion of exhibition spaces and public venues. New instructional studio spaces and offices for the fine arts programs will be constructed to meet the growing academic and artistic needs of CNU students, while addressing the technical demands of the rapidly evolving area of digital arts. This addition to campus will also provide a larger, acoustically balanced rehearsal hall, as well as additional equipment and instrument storage, and faculty offices.

### **James River Hall Addition**



New Construction: 55,127 square feet

Architect: Glave & Holmes

Contractor: To be determined

Design Start: July 2013

Construction Start: December 2014

Construction End: July 2016

Comments: The James River Hall expansion preplanning has been completed, and Detail Design is under way. This project supports a four-story addition to the existing James River Hall. The expansion will add 160 beds in a sophomore-style suite that includes two bedrooms organized around a shared common area and bathroom. Hall kitchens and study rooms will also be featured.

### **Regatta's Dining Hall Expansion**



New Construction: 13,860 square feet

Renovation: 1,500 square feet

Total: 15,360 square feet

Architect: Glave & Holmes

Contractor: To be determined

Design Start: July 2013

Construction Start: December 2014



Construction End: **July 2016**

Comments: Regatta's Dining Hall expansion preplanning has been completed, and Detail Design will soon begin. Due to the increase in meal plan subscriptions and new beds coming on line, Regatta's will be expanded to add an additional 200-plus seats organized around a two-story dining room and a mezzanine. The expansion includes new restrooms, storage, loading dock access and the relocation of the Mongolian Grill from the existing space.

### **Greek Village - Phase I**



New Construction: 38,084 square feet

Architect: Glave & Holmes

Contractor: To be determined

Design Start: July 2013

Construction Start: December 2014

Construction End: July 2016

Comments: Greek Village Phase I will provide four houses with 100 beds located near Santoro Hall between the tennis courts and Warwick River Hall. Each house will feature single and double bedrooms, a full kitchen, study rooms, elevators, a chapter room and outdoor social spaces.

## **Greek Village - Phase II**



New Construction: 62,690 square feet

Architect: Glave & Holmes

Contractor: To be determined

Design Start: July 2013

Construction Start: To be determined

Construction End: To be determined

Comments: Greek Village Phase II will provide the remaining six houses in four buildings, two of which are duplexes, with 190 beds located near Santoro Hall between the tennis courts and Warwick River Hall. Each house will feature single and double bedrooms, a full kitchen, study rooms, elevators, a chapter room and outdoor social spaces.

## **Alumni House**



New Construction: 7,500 square feet

Architect: Glave & Holmes

Contractor: To be determined

Design Start: July 2012

Construction Start: To be determined

Construction End: To be determined

Comments: The Alumni House will be located between McMurran Hall and Shoe Lane. It will include a reception hall with a grand staircase, a conference room, and two sitting rooms on the first floor. Offices for Alumni Relations will be located on the second floor.

---

## Athletics Update

### Women's Basketball



CNU's women are off to a 13-2 start this season and are ranked No. 16 in the nation. Tia Perry hit the 1,000th point mark on December 4 and Nicole Mitchell (pictured above) made her 1,000th point on January 15th.

### **Men's Basketball**



Led by preseason All-American Tra Benefield (pictured above), the men's basketball team has an overall record of 11-4 in our first year of competition in the Capital Athletic Conference.

### **Track and Field**





The Captains are off and running in the 2013-14 indoor track and field season. The distance runners paced a strong Captains' showing at the season opener, the CNU Holiday Open. Senior Jessica McClelland and junior Samuel Martin (pictured above) each posted victories in the mile, and sophomore Lydia Cromwell took the top spot in the 5000. The men's indoor track and field team is ranked 15th in the Division III national coaches' poll.

Visit [CNUsports.com](http://CNUsports.com) for the Captains' schedules and updates.

---

## Alumni Holiday Events

---

December was a busy month for Christopher Newport Alumni! More than 300 alumni participated in regional chapter holiday parties in Richmond, Northern Virginia, South Hampton Roads and the Peninsula. We welcomed hundreds more to campus for Holiday Happening, the Lighting of the Lawn, the December Graduate Alumni Pinning and the holiday shows at the Ferguson Center.

A special thank you to Pamela and Michael Deese for hosting the Metro D.C. party and to our alumni chapters for promoting and supporting these important gatherings.



Metro D.C. Alumni Chapter Holiday Party at the Home of Pamela and Michael Deese

Many thanks to the Peninsula Alumni Chapter for supporting scholarships at CNU. During the holiday party, members of the golf committee presented a \$5,000 check raised from the Captains Choice Golf Classic that took place during Homecoming.



Peninsula Alumni Chapter presents \$5,000 for scholarships at the annual holiday party at Three Oaks, the president's house.



Alumni with Richmond Chapter President Stephen Maxie, '99 (far right) at the Richmond Alumni Holiday Party at the Jefferson Hotel.

This has been an exciting year for the Christopher Newport Alumni Society, and we look forward to an even more successful 2014.



---

### CNU Photos

---

To share our campus spirit with you, each newsletter includes a link to a [photo gallery](#) featuring images of recent exciting events and campus life. Enjoy!

--

President  
Christopher Newport University  
1 Avenue of the Arts  
Newport News, VA 23606  
Phone: [757-594-7001](tel:757-594-7001)  
e-mail: [ptribble@cnu.edu](mailto:ptribble@cnu.edu)