

3.11A

The PRESIDENT'S LEADERSHIP PROGRAM

at Christopher Newport University

*Join us for the
Journey of a
Lifetime as a . . .*

**STUDENT
SERVANT
LEADER**



“Be the Captain of Your Ship”

Do you want to make your mark in this world? If so...here is your opportunity. The President's Leadership Program at Christopher Newport University was established by University President and former United States Senator Paul Trible. He had a vision to create opportunities for students who wanted to be “dream chasers” and “world changers.” He knew that a premier liberal arts education would have to include leadership studies. To shape the world, students must consider who they are, who they want to become and how they will get there.

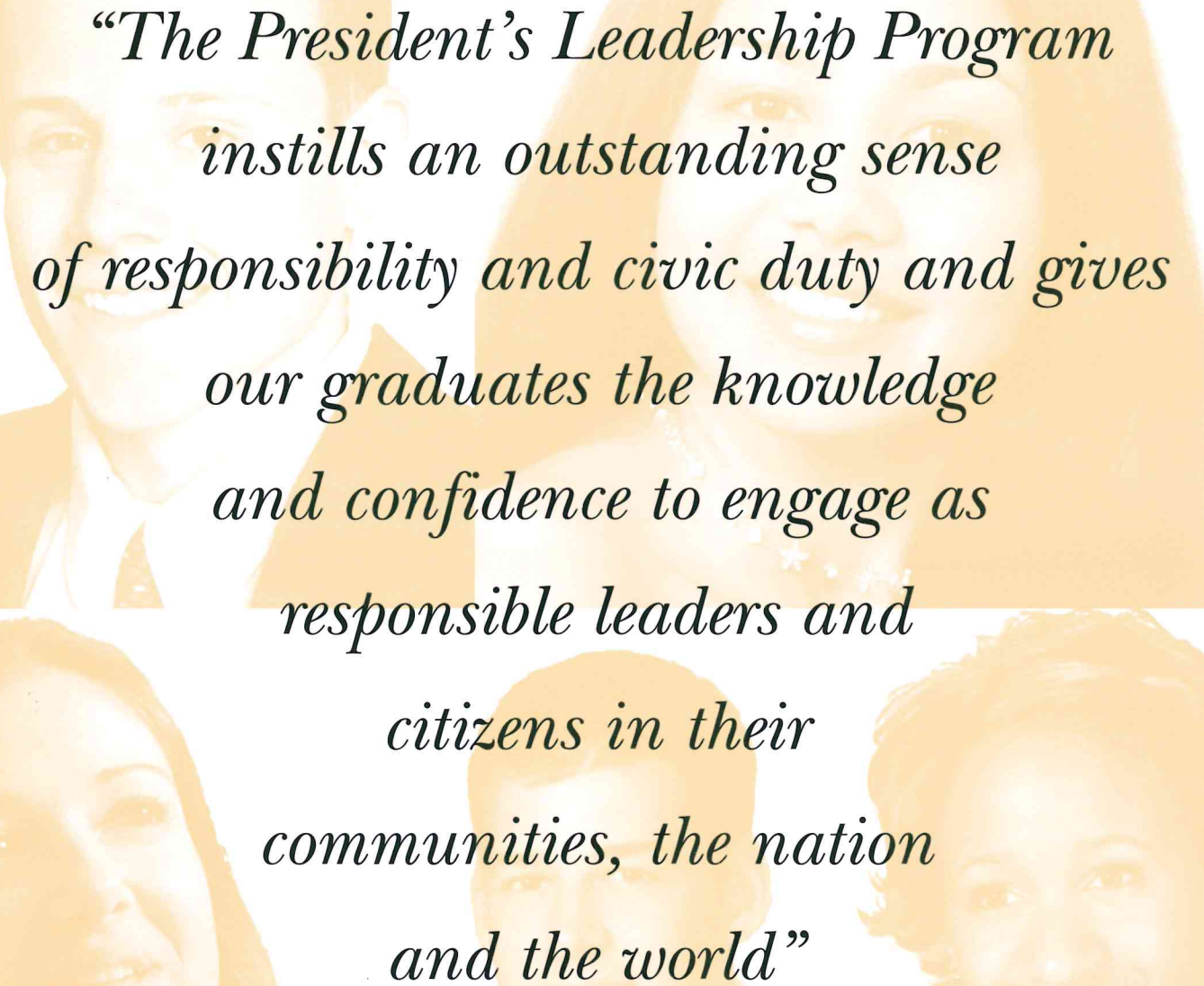
Are you ready to...

Make great friends?

Learn from experience?

Create your own opportunities?

Contribute to something greater than yourself?



*“The President’s Leadership Program
instills an outstanding sense
of responsibility and civic duty and gives
our graduates the knowledge
and confidence to engage as
responsible leaders and
citizens in their
communities, the nation
and the world”*

-Paul Trible, CNU President

Leadership learning at CNU consists of three basic components – Being, Knowing and Doing.

Being

You will first undertake a study in self-leadership. The foundation of the leadership process rests firmly on relationships between people. You must understand who you are – your values, attitudes, beliefs, and personality traits and how your personal qualities impact the leadership relationship.

Knowing

Leadership is not position, power or authority, but a process of leaders and followers coming together to achieve a common goal. To gain a better understanding of the leadership process, participants study theories, approaches, models and competencies through coursework in the leadership minor.

Doing

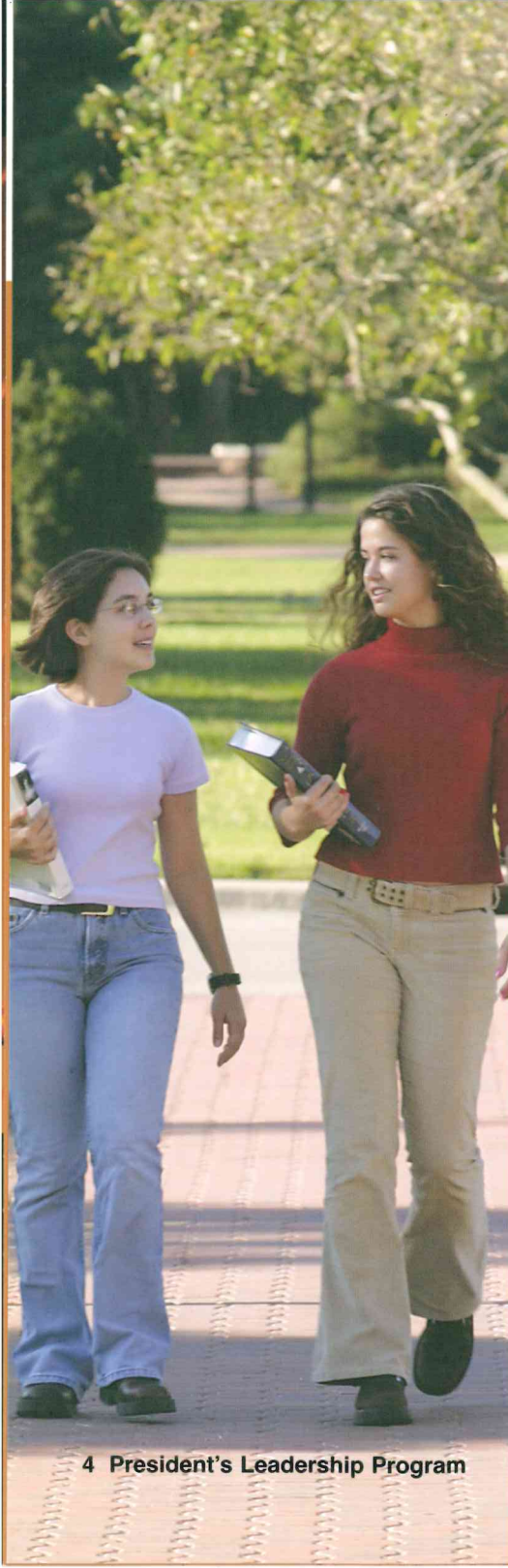
Understanding yourself and the leadership process prepares you to take responsible, ethical action in a multitude of circumstances. Through community service, internships and campus involvement, students are provided opportunities to practice leadership and enrich the University and the world.



Benefits of the program:

- The leadership minor will complement any major you choose. Leaders are desperately needed in all fields of endeavor.
- Each student will receive a \$500 residential scholarship each semester they participate, live on campus and retain a 2.5 G.P.A.
- Students will be eligible to receive a scholarship for international study.
- Each first-year student will be eligible to reside in Quest Housing with other members of the Leadership and Honors Programs.
- Everyone will have opportunities to dine with the President in his home and meet other business and political leaders.
- Many of our students participate in the Leadership as well as the Honors Program.

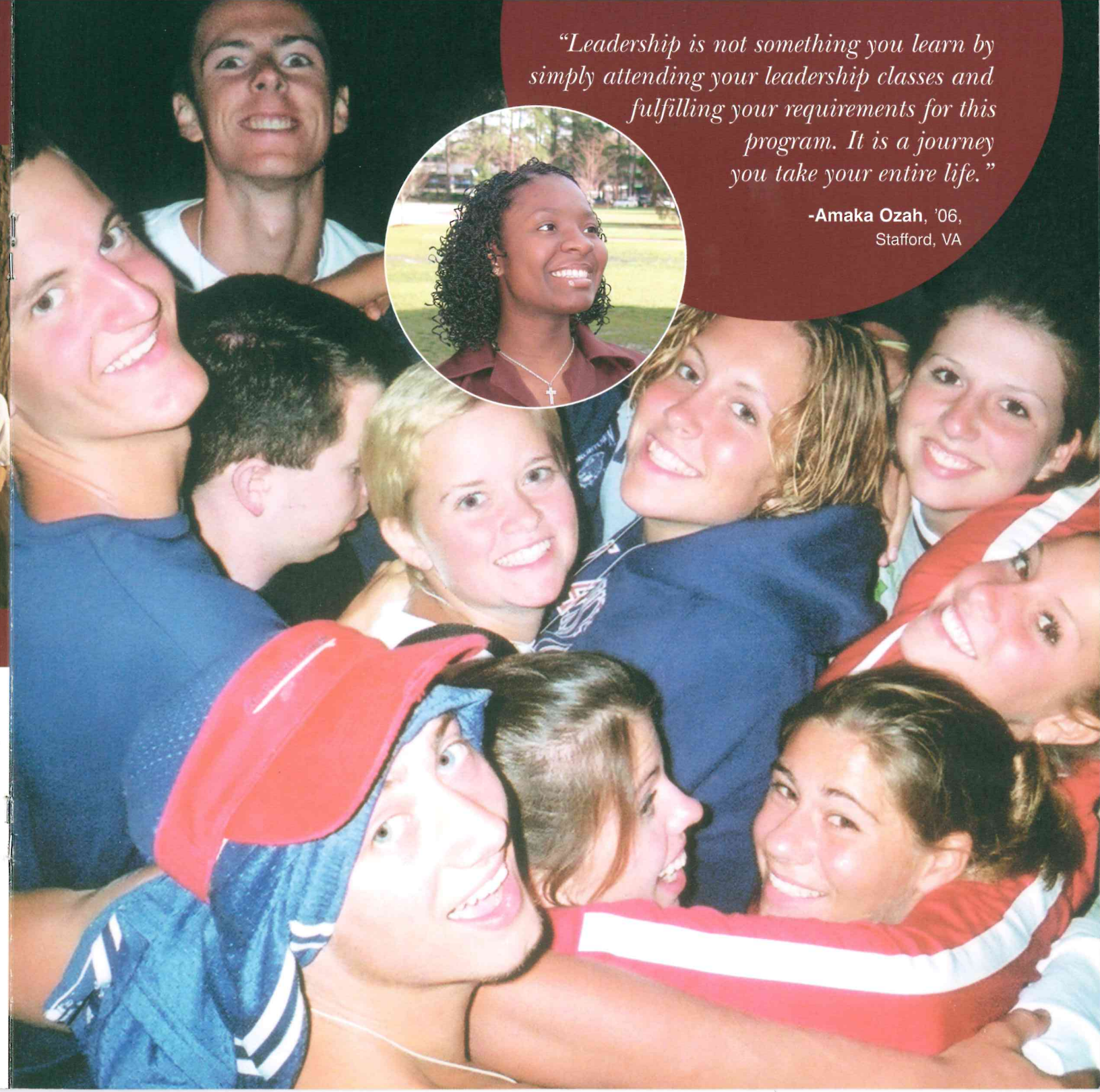
Great Friendships



The friends you make in college will be your friends for life. These are the people with whom you will socialize, study, live and lead. Before you ever start classes, you will be standing shoulder to shoulder with other students in a summer leadership adventure. You will be stretched by them and they will be challenged by you. Many of these same students will live with you in Quest Housing.

"Leadership is not something you learn by simply attending your leadership classes and fulfilling your requirements for this program. It is a journey you take your entire life."

-Amaka Ozah, '06,
Stafford, VA



Learn from Experience and Academic Study



Leadership cannot be learned by watching...it is something that must be experienced. Students in the leadership program are active on campus and in the community. They lead campus organizations and perform community service. You will be challenged to get out and practice what you are learning in the classroom.

Part of what makes PLP so unique is the active involvement of successful leaders from many backgrounds and professions. Interesting and accomplished leaders of business, industry and government visit often to share their experiences, successes and challenges. You will have the opportunity to engage them in dialogue, learning their techniques and strategies to help you develop your own leadership style. These inspiring discussions, as well as practical field experiences and civic involvement, provide a dynamic forum for learning.



"Being part of the leadership program has allowed me to become more involved on campus and in the community through service."

-Katy Holland, '07,
Mechanicsville, VA

Participate

"The President's Leadership Program has helped me to become more involved on campus. I have been afforded opportunities to become connected with faculty, other students, and President Tribble. I know my input will have an effect on shaping future programs and policies at CNU. I have learned about my personal styles of leadership and communication and how those styles relate to the styles of others. With this knowledge I feel I am better equipped to build successful relationships, not only as a leader but as a student, friend, peer, citizen, and any other role I may grow to fill."

-Marty Clatterbuck, '07,
Mechanicsville, VA



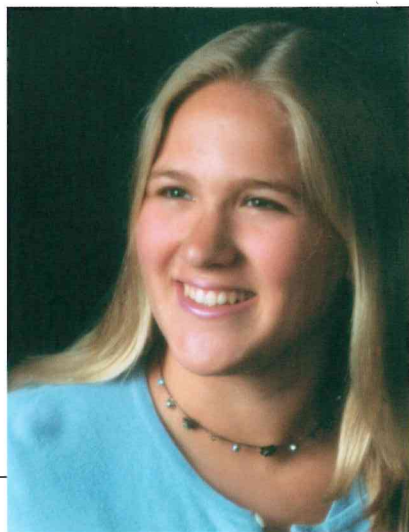
Contribute

"I joined the Leadership Program to make a difference. I want to be somebody who helps shape the history of CNU."

-George Jones, '07,
Providence Forge, New Kent County, VA

"The leadership program enhances your experience at CNU by teaching the ideals and morals that are essential for a leader. When I came into the program I was petrified of public speaking and now I feel I am a strong speaker and stronger person due to the influences of this program."

-Katie Brackett, '04,
Cazenovia, NY



Are you ready to contribute to something bigger than yourself?

Then consider joining the PLP!

Each fall, approximately 100 freshmen from all over the United States are admitted to the President's Leadership Program at CNU. We are looking for students who have exhibited leadership characteristics in their schools, churches and communities. Students will be selected on the basis of academic achievement. Applicants should have a minimum G.P.A. of 3.0 and 1100 SAT or better.

To apply to the President's Leadership Program:

- First apply and be accepted to the University.
- Complete a President's Leadership Program application.
- Submit responses to two essay questions. Each should total no more than 250 words.
- Submit a recommendation from a school official with whom you have worked closely.
- If chosen as a finalist, you will be contacted for a personal interview.

All applications and supporting materials should be sent to the Office of Admissions, 1 University Place, Newport News, VA 23606-2998. For an application please call the **Admissions Office** at **(757) 594-7015** or **1-800-333-4268** or visit the web at www.cnu.edu/preslead.

For more information about the **President's Leadership Program**, please contact us at **(757) 594-7207** or email preslead@cnu.edu.



CHRISTOPHER NEWPORT
UNIVERSITY

President's Leadership Program
1 University Place
Newport News, VA 23606-2998

www.cnu.edu/preslead