



STORMWATER RUNOFF - POLLUTION PREVENTION

When it rains, stormwater flows over impervious surfaces such as rooftops, parking lots, roads, and sidewalks. The runoff can pick up pollutants, such as oils, trash/debris, fertilizers, pesticides, paint, cleaners, and other chemicals and flows into storm drains located throughout the CNU campus. Unlike water that goes to the sanitary sewer system (most indoor drains), water flowing into storm drains is usually not treated and leads directly to a lake, stream, river, wetland, or coastal water. The pollutants carried by stormwater runoff affect water quality and impact wildlife. As you walk around campus, look for the “No Dumping, Drains to Waterway” markers attached to the storm drains.

Why is stormwater important?

The federal government has determined that stormwater runoff is the leading cause of water pollution in the nation. Stormwater pollution results from a wide variety of activities. Each of us can contribute to the problem, sometimes without even realizing it. The CNU campus community includes students, faculty, and staff who may not always be aware of their potential impact on the campus environment, including surrounding areas.

You can help reduce pollution by remembering to keep potential pollutants away from storm drains.

Everyone plays a part in improving stormwater quality. CNU is committed to educating the CNU campus community about the impacts of stormwater discharges on water bodies and the steps that the community can take to reduce pollutants in stormwater runoff. The goal of this brochure is to educate students, faculty, staff, and visitors at CNU about stormwater pollution and how to prevent it.

What are the problems with stormwater runoff?

It is important that we keep as much pollution out of stormwater as possible. The main concerns on campus are:

- Trash and debris;
- Oil;
- Sediment;
- Nutrients (phosphorus and nitrogen);
- Heavy metals; and,
- Toxic chemicals.



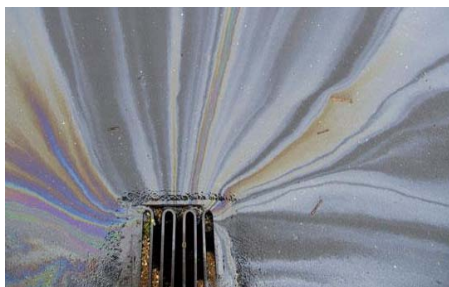
What can you do to prevent stormwater pollution?

Here is a list of things that you can do to minimize your impact on stormwater while on campus (or anywhere you are):

- Reuse and recycle where possible.
- Don't litter (even cigarette butts).
- Never dump anything down a storm drain.
- Keep pollutants off parking lots, roads, and sidewalks.
- Keep trash dumpster lids closed.
- Don't put liquid or hazardous wastes in trash dumpsters.
- Properly dispose of chemicals, oil, paint, antifreeze and other toxic materials.
- Dispose of waste properly in trash cans or dumpsters.
- Check your car for leaks and spills. Make repairs as soon as possible.
- Recycle used oil and other automotive fluids at a local household hazardous waste collection station.
- If you see illegal dumping or any evidence of pollution, report it to the CNU Grounds Department.



www.athensclarkecounty.com



www.spokanewastewater.org

The following are indicators of possible stormwater pollution:

- An oil sheen on the water's surface;
- Stains on and around the ground and storm drains;
- Unusual discoloration of grass, plants, and vegetation;
- Distressed (dead or dying) vegetation and plants;
- Dead or dying animal life; and,
- A thick layer of algae on a water body.

More information about CNU's stormwater management programs is available at the following website www.cnu.edu/grounds. You can also call the CNU Grounds Department at the phone number listed below.

Pollution Prevention

To make comments or suggestions, or to report potential stormwater contamination concerns, please call the CNU Grounds Department.

CNU Grounds Department 757-594-8700